

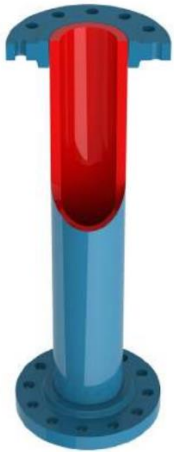
ArmorPIPE™ 7500 Series

Proven to be the most Cost Effective and Durable Solution for Incline Boreholes in Paste and Hydraulic Backfill Systems Globally.

The ArmorPIPE™ 7500 Series has been developed to withstand much higher levels of abrasion compared with traditional materials. These linings outperform traditional pipe lining material such as chrome overlays, rubber, urethane, basalt, hardened steel pipes and brittle, single phase materials.

The 7500 series is ideal for applications where a higher level of protection is required over the ArmorPIPE™ 6500 Series.

As a result, our systems have directly influenced significant decreases in maintenance, shutdowns and associated costs worldwide putting more money in your bottom line. This system is comprised of a metallic casing and proprietary ceramic composite linings with a nominal film thickness between 6 and 12mm.



Coupling Systems

All traditional threaded, weldable, flanged and Victaulic coupling systems can be accommodated. Casing sizes are selected to ensure the finished internal diameter matches your pipe's existing hydraulic diameter.

ArmorPIPE™ linings are easily repairable at end of life, producing quicker turnaround times, allowing the casing to be recycled and ultimately providing a dramatic reduction in the long-term costs.

Pay for fabrication once then simply maintain the lining for the life of the system.

Benefits

- Ceramic Reinforcement with high Moh Hardness produces excellent wear characteristics
- Energy absorbing proprietary matrix resists thermal-mechanical shock, reduces brittleness, and ensures reliable bonding
- Bond strength high enough to eliminate under-film corrosion
- Solvent free chemistry prevents pinholes

Applications

ArmorPIPE™ 7500 Series can be utilised in a variety of pipe applications:

- Incline hydraulic backfill/paste fill borehole casings
- Shotcrete Slick lines
- Process, slurry and tailings transport pipes
- Imatech ArmorBEND™ elbows and bends
- Cyclone underflow/overflow pipes and bends



Design Features

ArmorPIPE™ components are designed to accommodate the following service requirements and conditions:

Ease of installation	Hydraulic Design
Handling/weight limitations	Matching existing hydraulic diameter
Environmental concerns	Borehole size requirements
Pressure	

Chemical Resistance

The ArmorPIPE™ 7500 Series is suitable for full immersion service in a range of acids, alkalis and hydrocarbons including (tested at 21°C [70°F]):

10% Hydrochloric	6% Sodium Hypochlorite
5% Nitric	Bunker C
5% Phosphoric	Diesel Fuel
10% Sulphuric Acid	Isopropyl Alcohol
28% Ammonium Hydroxide	Kerosene
50% Potassium Hydroxide	Naphtha
50% Sodium Hydroxide	Salt Water & Sewage

