



# SEA WATER PUMP

# SUMMARY

**Industry:** Water Industry

**Product:** Chesterton® ARC BX2, Chesterton® ARC SD4i and Chesterton® ARC S1

**Plant:** Salt Water Pump

**Location:** Marrickville, NSW, Australia

**Summary:** Chesterton® ARC composites used to rebuild and protect pump components, providing long term abrasion and corrosion protection.



# PROBLEM DESCRIPTION

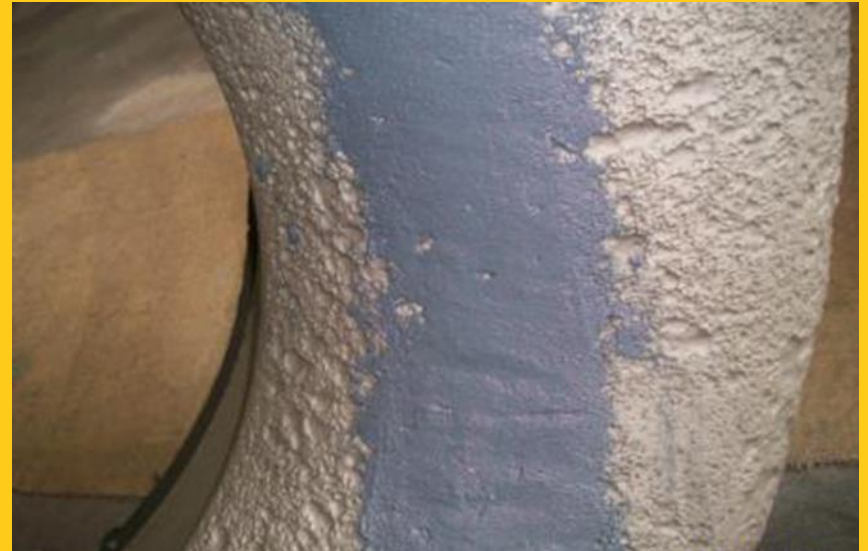
The internal surfaces of the bell and volute were degraded by years of running uncoated.

Replacement parts were not an option due to age, cost and lead time.



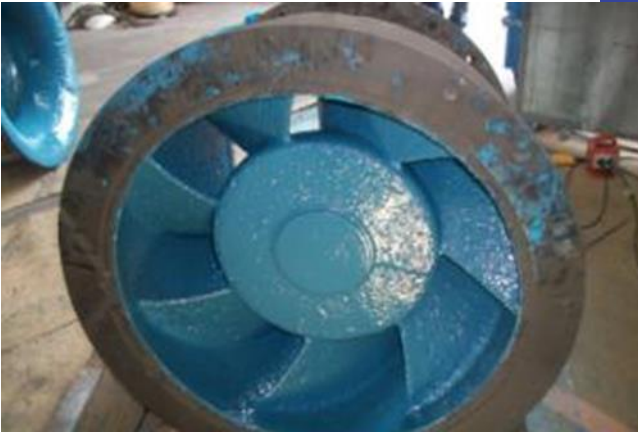
# SOLUTION

Chesterton® ARC BX2 was used to regrade the surface and offer long term wear resistance.



# RESULTS

- The bell diffuser and impeller were coated over with Chesterton® ARC BX2 and then Chesterton® ARC SD4i.
- Top coated (blue) with Chesterton® ARC S1.





# CONTACT

Australia Toll Free 1800 352 228  
International +61 2 8853 3000

[info@imatech.com.au](mailto:info@imatech.com.au)  
[imatech.com.au](http://imatech.com.au)