



# FRESH WATER CLARIFIER

# SUMMARY

**Industry:** Water Storage

**Product:** Chesterton® ARC CS2

**Plant:** Freshwater Clarifier

**Location:** Nowra, NSW, Australia

**Summary:** Chesterton® ARC CS2 is used to protect the clarifier floor from concrete degradation and provide a smooth surface to minimise build-up.

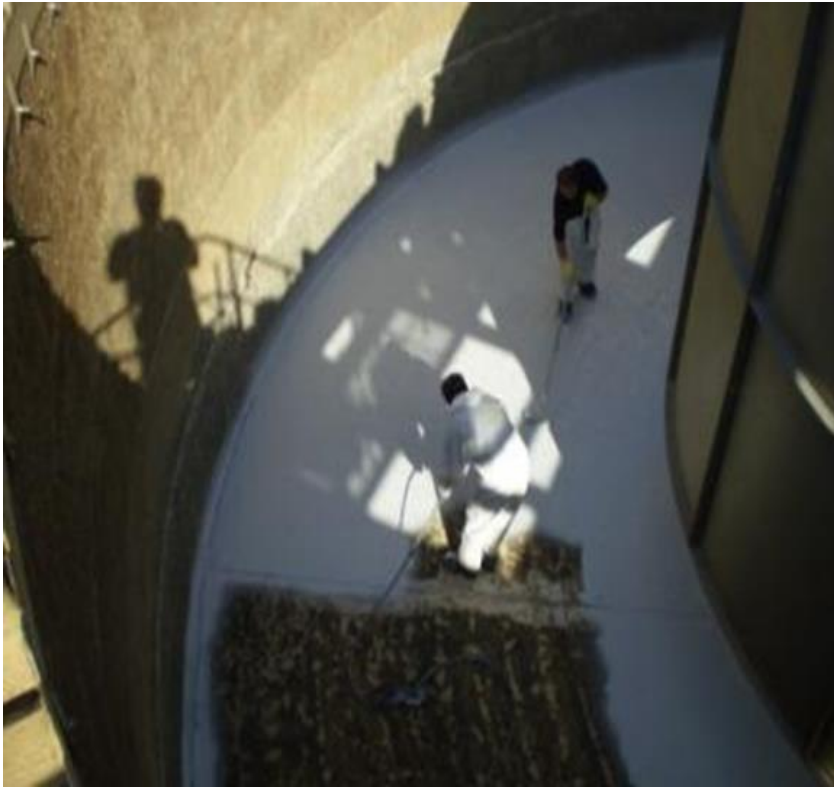


# PROBLEM DESCRIPTION



- Clarifier floor coating was non-existent and the concrete surface was rough and degraded.
- Joints in the concrete were starting to degrade.

# SOLUTION



Spray application rolled in.

- Surface preparation using HP water blasting to remove any loose contaminants.
- Apply 2 coats of Chesterton® ARC CS2 at 200µm DFT per coat.
- Colour differentiation between coats to allow for visual inspection.

# SOLUTION

## Expansion Joints

- Saw cut expansion joints ready for new sealant.
- Joints sealed using Chemproof flexible joint sealant.



# RESULTS

## Clarifier Floor



An aerial photograph of a massive open-pit mine. The mine is characterized by numerous terraced levels, creating a stepped appearance. The central area contains a large body of water, likely a tailings pond, surrounded by various processing structures and infrastructure. The surrounding landscape is arid and hilly, with some sparse vegetation. The sky is clear and blue.

# CONTACT

Australia Toll Free 1800 352 228  
International +61 2 8853 3000

[info@imatech.com.au](mailto:info@imatech.com.au)  
[imatech.com.au](http://imatech.com.au)