



CCD THICKENER EXIT CONES



SUMMARY

Industry: Mineral Processing – Nickel

Product: Chesterton® ARC MX1

Plant: CCD Thickeners

Location: Kalgoorlie, WA, Australia

Summary: Chesterton® ARC MX1 was specified to replace the failed rubber lining and protect the exit cones.



PROBLEM DESCRIPTION

With constant agitation and abrasion the rubber lining proved ineffective with lifting, delamination and underfill corrosion occurring.



SOLUTION



Existing failed rubber lining was removed using ultra high pressure water blasting.

Surfaces were then abrasive blasted prior to the application of Chesterton® ARC 855 primer and Chesterton® ARC MX1 trowel on ceramic composite.

SOLUTION

Lined with
Chesterton® ARC
MX1 at 6mm



Primed with
Chesterton®
ARC 855
for permeation
resistance.

RESULTS

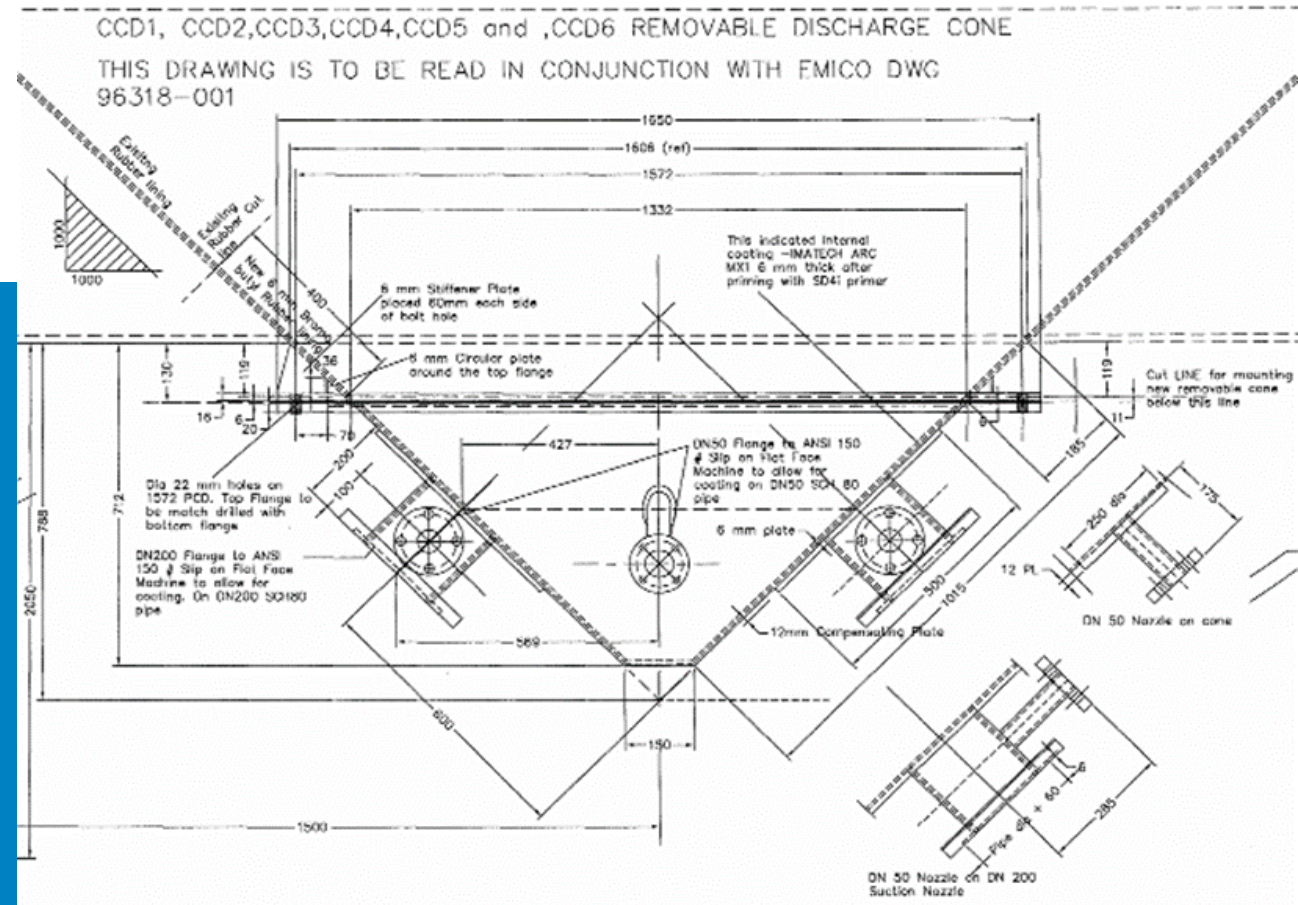
Chesterton® ARC MX1 was applied up to the existing undamaged rubber.



Chesterton® ARC MX1 was then over coated with Chesterton® ARC 855 to provide a smooth final finish.

RESULTS

As a result of long term success with the ARC system, Chesterton® ARC MX1 was specified for the lining of all rotatable exit cones.





CONTACT

Australia Toll Free 1800 352 228
International +61 2 8853 3000

info@imatech.com.au
imatech.com.au