

Pipes. Protection. Performance.

CASE HISTORY:

Xstrata Mt. Isa, Australia

Application: Mine Backfill
Type: Hydraulic/ Wet Fill
Velocity: up to 40 m/s



Conventional casing change-out every 8-10 weeks at considerable costs & production downtime.

Imatech's innovative engineered **ArmorPIPE™** solutions provide an unsurpassed level of wear resistance to pipes, bends and fittings in abrasive material transport applications.

What does this mean to you?

FEATURES

- Slurry Transport & Mine Backfill
- Extended Wear Life
- Predictable & Uniform Wear Characteristics
- On-Site Patch Repairs
- Innovative Wear Monitoring Features
- Engineered for Performance
- Tailored to Existing Infrastructure

BENEFITS

- Production Security and Increased Uptime
- Planned Maintenance versus Breakdown Maintenance
- Reduced Inventory
- Reduced Manpower Requirements
- Lowest Cost per Tonne Solution



Basalt Lining

Unpredictable failure after 80,000 to 300,000 tonnes of fill reticulated.



Oil Field Casing

Catastrophic failure after 250,000 tonnes of fill reticulated.



Imatech ArmorPIPE™

May 2005 - Installation of Imatech ArmorPIPE™ engineered casings.



After 2,000,000 tonnes

Having outperformed conventional pipes by a factor of 8, approximately 90% of the liner remaining!



The Future

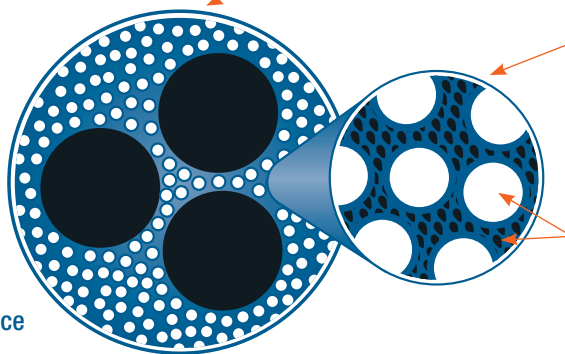
Estimated operation life of Imatech ArmorPIPE™ in this aggressive application is 15,000,000 to 20,000,000 tonnes of fill reticulated.

State of the Art Materials Technology

A stable and long lasting liner with a uniform wear characteristic.

FEATURES

- Optimal Abrasion Resistance
- Tough / Impact Resistant
- Easily Shaped and Moulded
- Excellent Adhesion
- Moderate to High Temperature Resistance



MATRIX

- Advanced Polymer Resin
- No Solvents
- Matrix to Substrate Adhesion up to 5,000 psi
- Energy Absorbent

MATRIX & REINFORCEMENT BOND

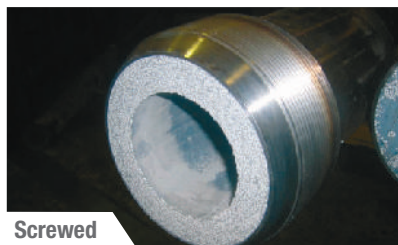
- Patented Surface Treatment
- Reinforcement to Matrix Cohesion up to 5000 psi
- Extremely Low Permeability
- Maximum and Lasting Bond-Strength

REINFORCEMENT

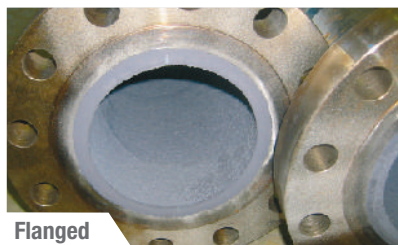
- Aluminium Oxide + Silicon Carbide Beads
- Maximum Packing Density
- High Moh-Hardness
- Third Hardest Material Known to Man

Custom Couplings & Tool Joints

Designed to your requirements.



Screwed



Flanged



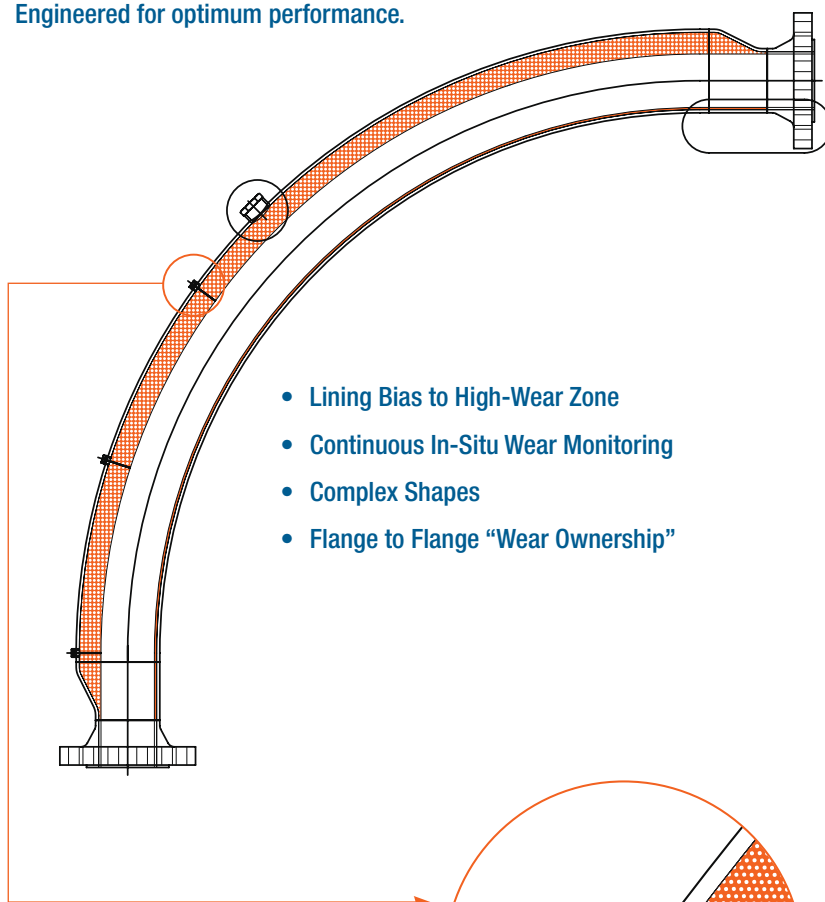
Welded



Victaulic

Custom Bends & Fittings

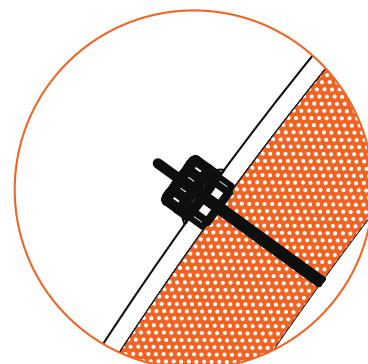
Engineered for optimum performance.



- Lining Bias to High-Wear Zone
- Continuous In-Situ Wear Monitoring
- Complex Shapes
- Flange to Flange "Wear Ownership"

Wear Monitoring Feature

ImaGAUGE™ for quick and easy in-situ wear monitoring.



For further information contact your nearest distributor:

ArmorPIPE™

BY

IMATECH

Australia (TOLL FREE)

1800 352 228

International +61 2 8853 3000