

# COAL SCREEN UNDERPAN



## CASE HISTORY

1800 352 228    [WWW.IMATECH.COM.AU](http://WWW.IMATECH.COM.AU)

 **IMATECH**  
INNOVATIVE INDUSTRIAL SOLUTIONS

# SUMMARY

**INDUSTRY** : Coal

**PRODUCT** : ARC SD4i and ARC BX2

**EQUIPMENT** : Coal Screen Underpan

**LOCATION** : Moranbah, QLD, Australia

**DATE** : November, 2011

**SUMMARY** : Removal of failed polyurethane and protected with ARC ceramic composite coating.

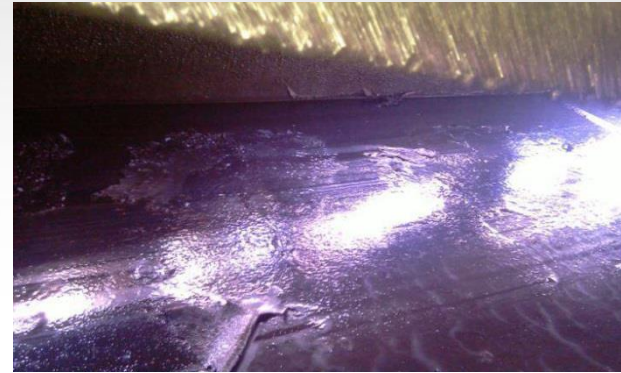
# PROBLEM DESCRIPTION

- The underpan was originally coated with polyurethane. The polyurethane was failing due to inter-coat adhesion issues and was coming off in sheets.
- This was causing pump blockages and leaving the under-pan susceptible to premature corrosion issues.





# PROBLEM DESCRIPTION



# SOLUTION

- Imatech removed the polyurethane using ultra high water pressure blasting.
- The underpan was then abrasive blasted to our specifications.





# SOLUTION



# SOLUTION

ARC BX2 trowelable ceramic coating was then coated at a thickness of 6mm directly under the inlet; assisting with a greater protection against aggressive wear.



# SOLUTION

We then applied two coatings of our ARC SD4i ceramic reinforced composite coating, at a thickness of 400 microns each; giving a total thickness of 800 microns.

The first coat was done in blue and the second coat in grey, assisting in future wear indication.





# SOLUTION



# RESULTS

The following photos are from an inspection six months later. It can be observed that the top coat of SD4i is untouched and the BX2 coating is intact.



# RESULTS





# CONTACT US

Let us help you find out how our Abrasion Resistant Coatings can improve your operations and save you time and money.

Toll free : 1800 352 228  
International : +61 2 8853 3000  
Email : [info@imatech.com.au](mailto:info@imatech.com.au)  
Website : [www.imatech.com.au](http://www.imatech.com.au)